

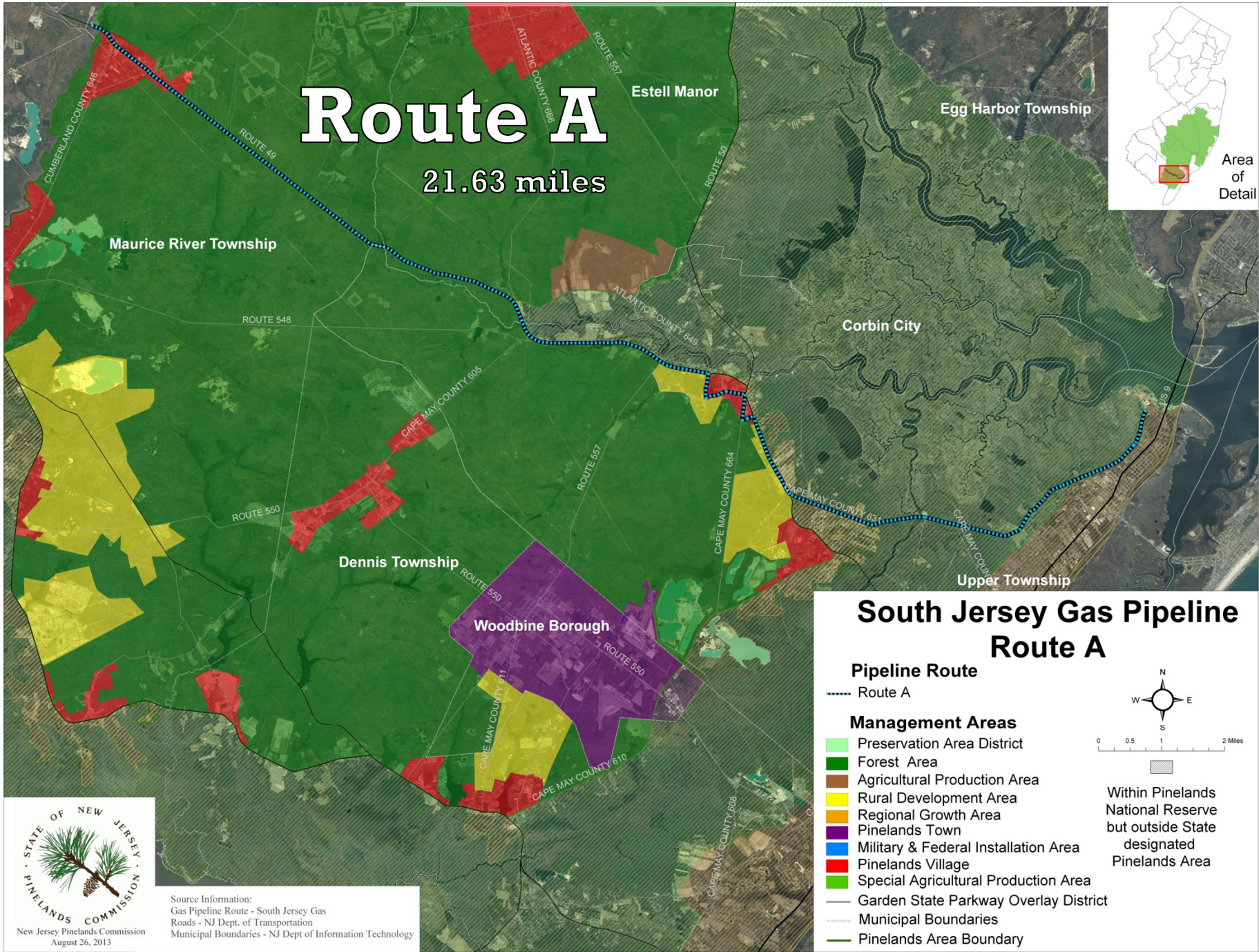
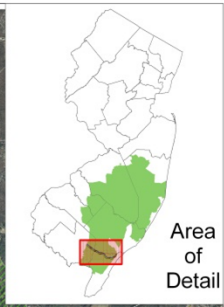


# Proposed MOA with the Board of Public Utilities

Policy & Implementation Committee  
December 4, 2013

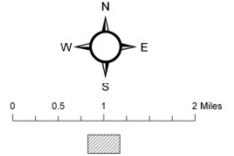
# Route A

21.63 miles



## South Jersey Gas Pipeline Route A

- Pipeline Route**
- Route A
- Management Areas**
- Preservation Area District
  - Forest Area
  - Agricultural Production Area
  - Rural Development Area
  - Regional Growth Area
  - Pinelands Town
  - Military & Federal Installation Area
  - Pinelands Village
  - Special Agricultural Production Area
  - Garden State Parkway Overlay District
  - Municipal Boundaries
  - Pinelands Area Boundary
- Within Pinelands National Reserve but outside State designated Pinelands Area



Source Information:  
 Gas Pipeline Route - South Jersey Gas  
 Roads - NJ Dept. of Transportation  
 Municipal Boundaries - NJ Dept of Information Technology

# Past Presentations

---

## June 28, 2013 Pinelands Commission

- Overview
  - BL England AACO
  - Status of BPU process
  - Proposed gas line
    - 3 routes
  - Potential Impacts
  - Need for MOA

## August 28, 2013 Pinelands Commission

- Detailed review of application

## September 28, 2013 South Jersey Gas

- Existing infrastructure
- Routes
- HDD
- Threatened and endangered species
- Safety

# CMP Compliance

---

- **Subchapter 6 – Compliant**
- **Subchapter 5 – Public infrastructure**
  - Permitted in Rural Development and Village areas of route but in the Forest Area only where it :
    - Primarily serves the needs of only the Pinelands
  - The redundancy portion of the line does not meet this standard as there are more “meters” served outside the Pinelands than within

# CMP Compliance

---

The CMP recognizes the need to address projects that are not fully consistent and allows three mechanisms for such projects to proceed:

- **Waivers for:**
  - hardship or
  - compelling public need
  
- **Intergovernmental Memorandum of Agreement**

# CMP Compliance

---

- An MOA must contain measures that, at a minimum, afford an equivalent level of protection of the resources of the Pinelands than would be provided through strict application of the standards of the CMP.
- This authorizes the Commission to approve development where compliance with the CMP's objectives and goals is obtained through alternative measures.

# CMP Compliance

---

- The draft MOA is intended to authorize the construction of the portions of the proposed gas pipeline within the Forest Area.
- No other deviations are required

# Other Agency Approvals

---

## **New Jersey Department of Environmental Protection**

- CAFRA
- WQMP Consistency
- Preconstruction Air Permit
- NJPDES Discharge to Surface Water
- NJPDES Stormwater

**Army Corps of Engineers**

**U.S. Fish & Wildlife**

**National Park Service**

**State Agricultural Development Committee**

**NJ Board of Public Utilities**



# Existing Gas Infrastructure

---

## Gas Pipelines approved to date:

- 10 approvals issued
- 49.24 miles/ 23.06 miles in Forest Area
- All Certificates of Filing

# Memoranda of Agreement

From 1988 to date there have been 19 deviation MOAs

- NJ Highway Authority – telecommunication cables on GSP
- Stockton State College Master Plan
- 3 MOAs NJ Transit/ NJHA/NJDOT Herbicide Use
- SJTA expansion of Farley Plaza
- NJDEP/Woodland/NJCF rec vehicle facility in Preservation Area
- 2 MOAs OCUA/ Evesham Township application of sludge derived product
- Atlantic County Lake Lenape Park development projects
- NJDEP/Southern Ocean Landfill use of recycled waste materials for landfill closure
- Evesham Township/Evesham MUA construction of wastewater lagoons in RDA
- SJTA Atlantic City Airport development
- BPU construction of electric transmission line within GSP right of way
- Buena Borough Utilities Authority/Buena Vista Township wastewater recharge
- Stafford Township/Ocean County landfill closure and business park redevelopment
- DEP/DHS connection of Ancora to Camden County wastewater system and development
- NJTA Garden State Parkway widening
- Ocean County Robert Miller Airpark improvements

# Previous Public Purpose MOAs

---

- NJDEP/Woodland/NJCF - private recreational vehicle facility in Preservation Area on privately owned property
- OCUA application of sludge derived products on public and private property
- NJDEP/Southern Ocean Landfill - privately owned landfill permitted to accept waste to help pay for closure
- Ocean County/Stafford Township - private party purchased and redeveloped township owned property
- NJ Highway Authority - private communication companies installed and own telecommunication cables within GSP right of way.
- South Jersey Transportation Authority - facilities at the Airport are owned by private parties and will be built privately
- Board of Public Utilities – a utility company constructed and owns electric transmission facilities within GSP right of way

# How Public Utility Service is Provided in New Jersey

---

- How service is provided
- BPU's jurisdiction over utility providers
- What other states do

# Needs Served by the Project

---

## 1. **Air Quality**

- DEP AACO
- DEP Air Modeling

## 2. **Energy Capacity**

- State Energy Master Plan
- National Electric Transmission Congestion Study
- PowerGem Reports

## 3. **Reliability**

# Air Quality

**DEP Air Modeling shows the following benefits over the Pinelands Area:**

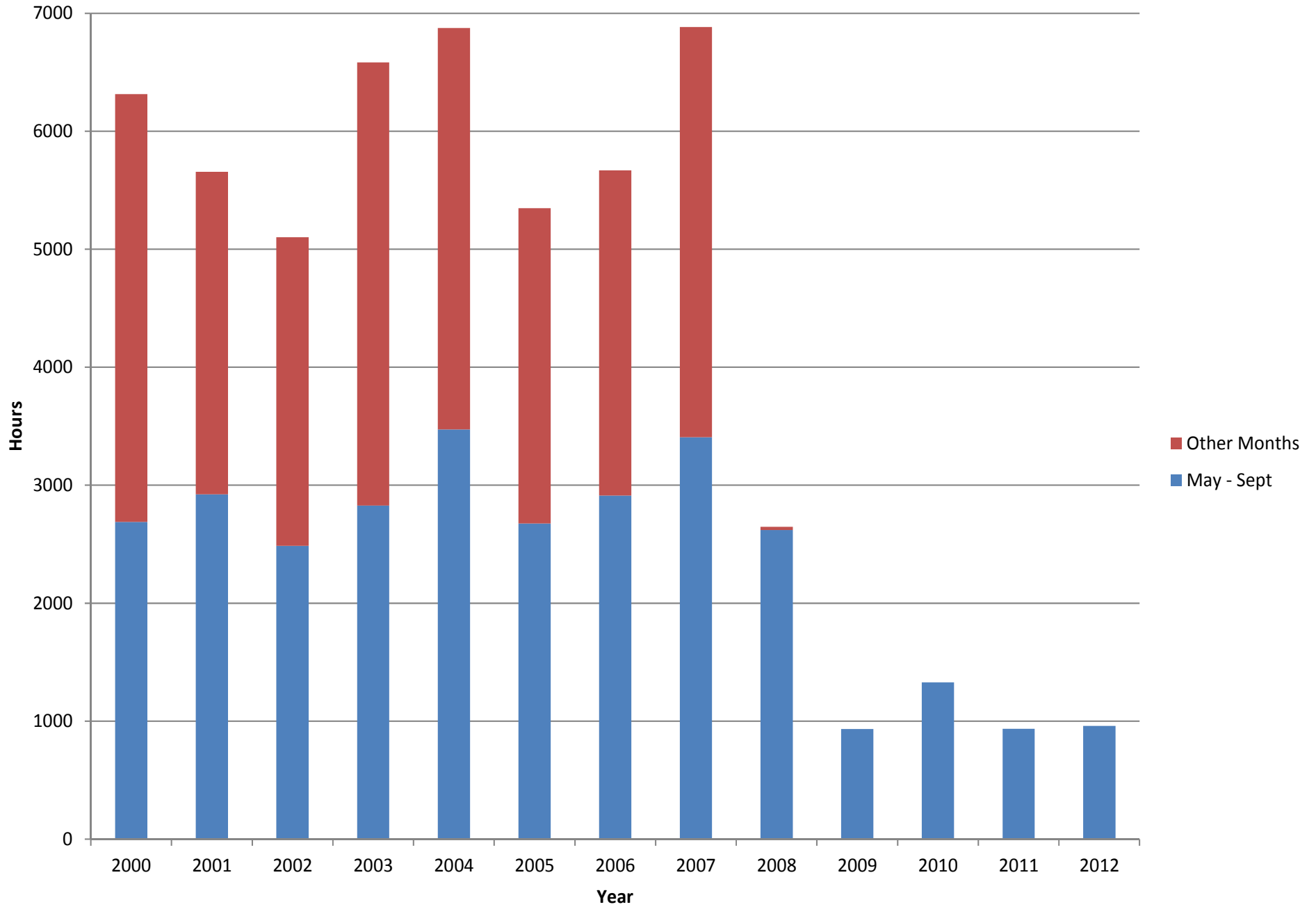
- Up to 40.9% reduction on the maximum existing background 1- hour sulfur dioxide (SO<sub>2</sub>) concentrations
- Up to 41.4% reduction in the maximum existing background 3- hour sulfur dioxide (SO<sub>2</sub>) concentrations

# Air Quality

According to the DEP report, the reductions in emissions and air pollution concentrations over the Pinelands Area will result in benefits including:

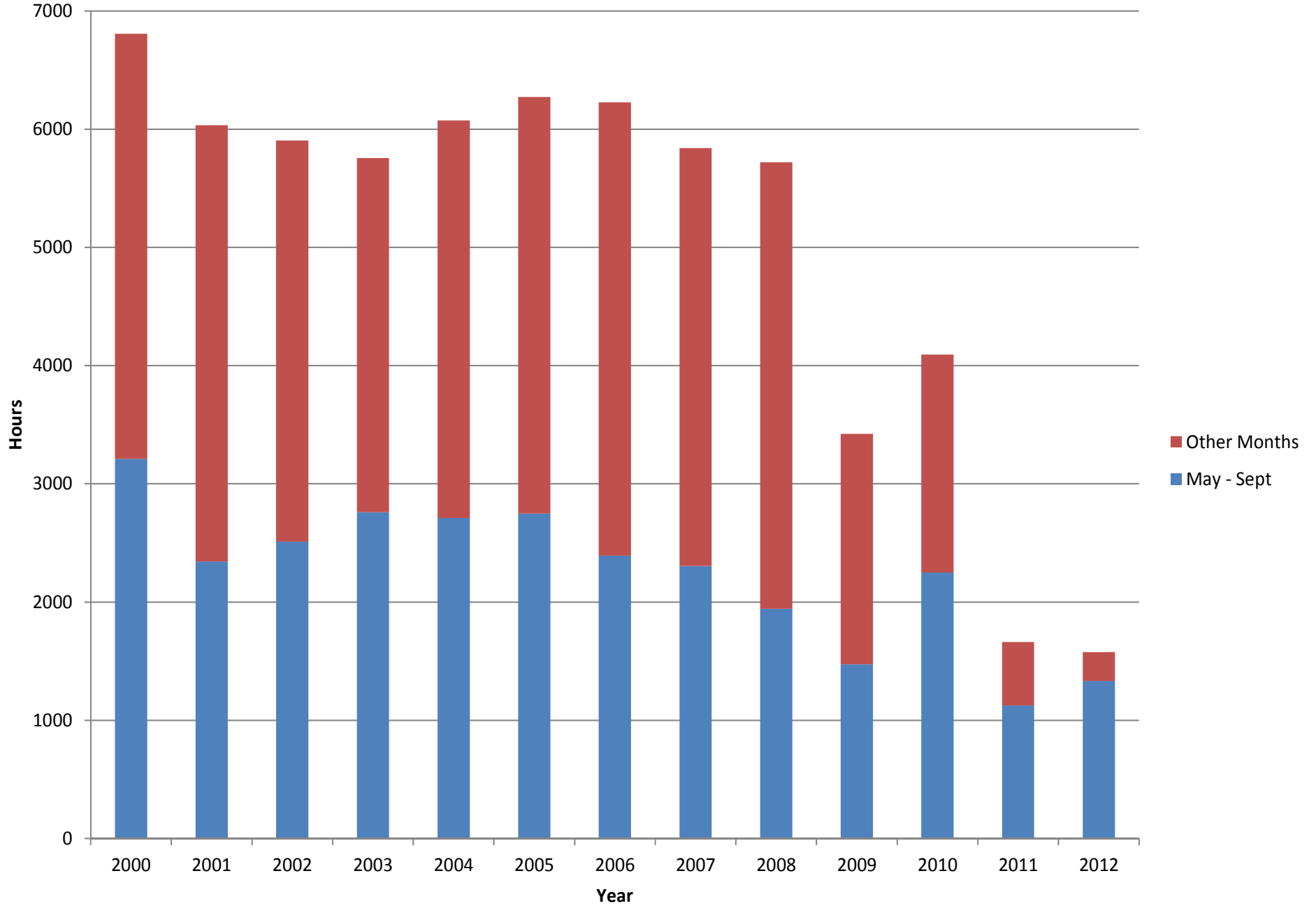
- Less potential for acute and chronic damages to plants due to lower SO<sub>2</sub> concentrations
- Reduced SO<sub>2</sub> and NO<sub>x</sub> (nitrogen oxides) emissions will result in less acid rain formation, a benefit to plants, lakes, fish and wildlife
- Reduced emissions of NO<sub>x</sub>, an ozone precursor, will result in lower ozone concentrations in the Pinelands and reduced ozone damage to plants and vegetation
- Reduced SO<sub>2</sub>, NO<sub>x</sub> and PM<sub>2.5</sub> (Particulate Matter) emissions will improve visibility over the Pinelands Area
- A 94% reduction in allowable mercury emissions will benefit fish and animals that eat the fish, as well as the overall environment

# Operating Hour Trend of BL England Unit 1 (Coal)





## Operating Hour Trend of BL England Unit 2 (Coal)



# Energy Capacity

## 2011 Energy Master Plan

- Expressed goal of promoting a diverse portfolio of new, clean cost-effective in state electric generation
- Acknowledges need to find base load generation to replace the Oyster Creek Nuclear Generating Station and targets the expansion of natural gas-fired power generation
- Directs state agencies to accelerate the decommissioning of older, less efficient coal- and oil-fired electrical generation plants and to rely more upon natural gas and to promote the expansion of pipelines to supply natural gas
- Recognizes that South Jersey in particular lacks adequate natural gas infrastructure necessary to support new, gas-fired generation as well as substitution for other fuels in the residential and commercial sectors

# Energy Capacity

---

## National Electric Transmission Congestion Study

- New Jersey is located within the US Department of Energy (DOE) designated Mid-Atlantic Critical Congestion Area
- This area was designated based on severely inadequate transmission capacity that threatens the reliability of the electrical grid

# Energy Capacity

## PowerGem (Power Grid Engineering and Markets) Reports

- Found that the BL England plant contributes 45% of the load within the Pinelands Area and 86% after the scheduled shut down of the Oyster Creek Nuclear Generating Station
- Found that the retirement of the BL England plant would negatively impact eight transmission circuits located proximate to the Pinelands Area

# Measures to Afford Equivalent Level of Protection

---

- **Air Quality Benefits**
- **Terms of Agreement:**
  - Deed restriction of pipeline right of way
  - Land acquisition
  - Education and research
  - Environmental conditions

# Education and Research

- Funds to finance the installation of a Pinelands Education Center to be located in the Richard J. Sullivan Center. The center has already been designed (see photo on right).
- Funds for the Commission's education or outreach-based programs or initiatives such as World Water Monitoring Day, the Pinelands Short Course, Pinelands Research Series ...



# Select Environmental Conditions

---

## Independent biologist(s)

- Approved by Pinelands Commission
- On site at all times during construction activities proximate to habitat

## Independent engineer

- Approved by Pinelands Commission
- On site during all phases of HDD

## Primary and secondary field marking

## Onsite Archaeologist for site preparation